

## 10 Cbm Dongfeng 120hp Eu 5 Engine Street Clean Truck For High Pressure Road Jetter

Our Product Introduction

for more products please visit us on [hbitruck.com](http://hbitruck.com)

### Basic Information

- Place of Origin: Hubei, China
- Brand Name: itruck
- Certification: ccc
- Minimum Order Quantity: 1
- Price: \$43,700.00/units 1-4 units
- Packaging Details: nude with waxing
- Delivery Time: 20-25 working days
- Payment Terms: L/C, T/T, D/P
- Supply Ability: 50 units per month

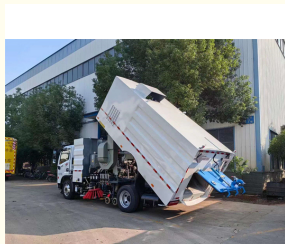


### Product Specification

- Condition: New
- Transmission Type: Manual
- Emission Standard: EURO 3
- Fuel Type: Diesel
- Dimensions (L X W X H) (mm): 7000X2300X2700 Mm
- Gross Vehicle Weight: 11000
- After-sales Service Provided: Video Technical Support, Field Installation, Commissioning And Training, Free Spare Parts
- Product Name: Road Sweeper Truck
- Driving Type: 4\*2
- Keyword: Street Clean Truck
- Engine Power: 120hp To 140hp
- Brand: Dongfeng
- Highlight: 10 cbm Street Clean Truck,



### More Images



## Product Description

### 10 cbm Dongfeng 120hp Eu 5 Engine Street Clean Truck for High Pressure Road Jetter

High pressure washing and sweeping truck.

#### 1. Working principle of washing and sweeping truck

The cleaning and sweeping vehicle combines the functions of a road sweeper and a high-pressure cleaning vehicle. Generally, it comes standard with two center mounted brushes (equipped with a V-shaped high-pressure water spray rod in front of the brushes) and a center mounted suction nozzle (with a built-in high-pressure water spray rod). The washing and sweeping vehicle sprays high-pressure water from the high-pressure water spray rod during operation, which can flush stubborn attachments on the road surface. The water and garbage are sucked into the garbage bin together with the suction nozzle. Due to the high water consumption of the washing and sweeping vehicles during the operation, the water tank is relatively large. Therefore, the washing and sweeping vehicles are all modified from chassis with a wheelbase of 3800 mm or more. The washing and sweeping vehicle is equipped with a 17 meter high-pressure water flushing reel and a high-pressure water gun, making it more convenient and efficient to clean roads, sidewalks, and small advertisements.

#### 2. Applicable environment for washing and sweeping truck

The cleaning truck has good cleaning effect and convenient maintenance, and is suitable for mechanized cleaning, sweeping, spray dust reduction and other cleaning operations of urban roads, highways, squares, airports, docks, tunnels, bridges, separation walls, curbs and curb facades.

#### Main Technical specifications

Overview	
Chassis model	EQ1110SJ8BDC
Wheelbase	3800mm
Front/rear suspension	1130/2070 mm
Chassis engine	YC4FA120-30
Chassis engine	88kw, 2982cc, 120hp
Spare engine	64 kW
Max upgrade angle	30%
Emission standard	Eu 3
Accelerating outside noise	≤84dB(A)
Max speed	100 km/h
Approach angle	20°
Departure angle	11°
Kurb weight	7045 kg
Whole weight	11450kg
Whole dimension	7000×2200×2700mm
Minimum height above ground	250 mm
High pressure clean	
Clean speed	3~20 Km/h
Clean width	3 m
Water pressure	12 MPa
Water pump flow	115 L/min
Clean and suction performance	
Cleaning efficiency	≥95%
Maximum suction particle size	110 mm
Clean and suction width	3 m
Max clean capacity	60000 m <sup>2</sup> /h
Disc brush size	≥400 mm
Clean and suction speed	3-20 km/h
Tank capacity	
Water tank volume	5 m <sup>3</sup>
Dust tank volume	5 m <sup>3</sup>
Dump bin tilting angle	≥46°
Discharge door opening angle	≥85°
Hydraulic Hydraulic system	
Model	Open, electrical control

Major parts	Gear pump, hydraulic motor, hydraulic cylinder, solenoid valve
System pressure	16 MPa
Oil tank	60 L
Oil temperature	60 °C
Electrical system	
Model	DC24 V
Voltage	24 V
Battery	24 V
Sweeping devise	

Model	Center two swabs, driven by a hydraulic motor, and the front right can be controlled independently, with a evasive reply function.
Brush diameter	850 mm
Brush angle	Tilt forward: 4-6 degrees Tilt: 4-7 degrees
<b>Sucking plate</b>	
Model	Double suction, hydraulic control, spring suspension.
Suction plate diameter	180 mm
Suction plate width	1800mm
<b>High pressure water system</b>	
Model	post pump
No.:	Germany PT36
System pressure	10 MPa
Speed	1150 r/min
Water valve model	Hydraulic pressure ball valve.
Water valve pressure	7 MPa
Spray nozzles model	High pressure washing type
Water filter	Mesh type
<b>Water spray system</b>	Electric diaphragm pumps, water filters, nozzles, etc.

#### Truck tools

No.:	ITEM	QTY	REMARK
1	Fire hose	2	
2	Fire wrench	1	
3	Water filter wrench	1	
4	High pressure water jet gun	1	
5	Spare tire	1	7.00R16
6	Manual hydraulic pump rocker	1	

#### Truck spare parts

No.:	ITEM	QTY	
1	Brushing	1	
2	Suction cup front rubber	1	
3	After the suction cup	1	
4	Fan belt	5	
5	Water pump belt	3	
6	Casters	4	
7	O-rings and combination washers		
8	Middle baffle rubber	1	
9	Seal	1	

#### Major import configurations

No.	Item	Type	Manufacturer
1	High pressure water pump	PT36	Germany PINFL
2	Automatic unloading after valve	VB200/150	Germany PINFL
3	Flood valve	VS200-180	Germany PINFL
4	Nozzle	B1/4MEG	America spray company
5	Liquid level switch	LME200B5/24V	Italy SOFIMA
6	CPU	6ES7 214-1AD23-OXB0	Germany SIEMENS
7	Digital quantity extension module	6ES7 223-1PH22-OXA0	Germany SIEMENS
8	The central distribution box	DVEC	America COOPER
9	Stepping motor	57H41-2.7-001	America Haydn
10	Switch gear cabinet	NE-AG	Korea HIBOX
11	Switch Control		Japan IDEC
12	Proximity switch	NBB10-30GM50-E0	PEPPRL FUCHS
13	Suction pipe		NORRES
14	Hydraulic motor	BMR125	Brevini
15	Hydraulic valve	SWH-G02-C4-D2H	Radix stemonae machines

High pressure road sweeper truck picture





High pressure road sweeper truck function display



High pressure road sweeper truck bulk order



High pressure road sweeper truck loading





**Hubei iTruck Import and Export Trading Co., Ltd**



0086 19947597881



alex@hbitruck.com



hbitruck.com

ROOM B1084 FLOOR 9TH-14TH, BUILDING A, BAOYE CENTER, NO. 31ST, JIANSHE FIRST ROAD,  
QINGSHAN DISTRICT, WUHAN