

## Chinese 9 cbm Water Tank and 7 cbm Dust Waste Tank Dongfeng Sweeper Truck

Our Product Introduction

for more products please visit us on hbitruck.com

### Basic Information

- Place of Origin: Hubei
- Brand Name: itruck
- Certification: ccc
- Minimum Order Quantity: 1
- Price: 57800
- Packaging Details: nude with waxing
- Delivery Time: 30-35 working days
- Payment Terms: L/C, D/A, T/T, Western Union
- Supply Ability: 50 units per month

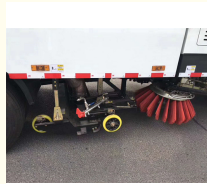


### Product Specification

- Drive Model: 4x2
- Gross Weight Vehicle: 18,000 Kg
- Dumping Method: Rear Dump
- Transmission: 6 Gears
- Water Tank Capacity: 9000 Liters
- Waste Suction Tank: 7000 Liters
- Curb Weight: 11,350 Kg
- Fuel Type: Diesel
- Spare Engine: EQB160-20
- Clean Speed: 3-20 Km/h
- Clean Width: 3.5m
- Water Pressure: 10 MPa
- Water Pump Flow: 154 L/min
- Cleaning Efficiency: ≥95%
- Maximum Suction Particle: 110 Mm



### More Images



### Product Description

#### Chinese 9 cbm Water Tank and 7 cbm Dust Waste Tank Dongfeng Sweeper Truck

##### High pressure washing and sweeping truck.

##### 1. Working principle of washing and sweeping truck

The cleaning and sweeping vehicle combines the functions of a road sweeper and a high-pressure cleaning vehicle. Generally, it comes standard with two center mounted brushes (equipped with a V-shaped high-pressure water spray rod in front of the brushes) and a center mounted suction nozzle (with a built-in high-pressure water spray rod). The washing and sweeping vehicle sprays high-pressure water from the high-pressure water spray rod during operation, which can flush stubborn attachments on the road surface. The water and garbage are sucked into the garbage bin together with the suction nozzle. Due to the high water consumption of the washing and sweeping vehicles during the operation, the water tank is relatively large. Therefore, the washing and sweeping vehicles are all modified from chassis with a wheelbase of 3800 mm or more. The washing and sweeping vehicle is equipped with a 17 meter high-pressure water flushing reel and a high-pressure water gun, making it more convenient and efficient to clean roads, sidewalks, and small advertisements.

##### 2. Applicable environment for washing and sweeping truck

The cleaning truck has good cleaning effect and convenient maintenance, and is suitable for mechanized cleaning, sweeping, spray dust reduction and other cleaning operations of urban roads, highways, squares, airports, docks, tunnels, bridges, separation walls, curbs and curb facades.

##### Main Technical specifications

Overview	
Chassis model	DFL1160BX3

Our Product Introduction

Wheelbase	4700mm
Front/rear suspension	1430/2150 mm
Chassis engine	B190-33
Spare engine	EQB160-20
Chassis engine	140kw, 5900cc, 190hp
Spare engine	155 kW
Max upgrade angle	30%
Emission standard	Eu 3
Accelerating outside noise	≤84dB(A)
Max speed	103 km/h
Approach angle	20°
Departure angle	13°
Kurb weight	11350 kg
Whole weight	16000kg
Whole dimension	8580×2490×3100mm
Minimum height above ground	230 mm
<b>High pressure clean</b>	
Clean speed	3-20 Km/h
Clean width	3.5 m
Water pressure	10 MPa
Water pump flow	154 L/min
<b>Clean and suction performance</b>	
Cleaning efficiency	≥95%
Maximum suction particle size	110 mm
Clean and suction width	3.5 m
Max clean capacity	70000 m <sup>2</sup> /h
Disc brush size	≥400 mm
Clean and suction speed	3-20 km/h
<b>Tank capacity</b>	
Water tank volume	9 m <sup>3</sup>
Dust tank volume	7 m <sup>3</sup>
Dump bin tilting angle	≥46°
Discharge door opening angle	≥85°
Hydraulic Hydraulic system	
Model	Open, electrical control

Major parts	Gear pump, hydraulic motor, hydraulic cylinder, solenoid valve
System pressure	16 MPa
Oil tank	60 L
Oil temperature	60 °C
<b>Electrical system</b>	
Model	DC24 V
Voltage	24 V
Battery	24 V
<b>Sweeping devise</b>	
Modle	Center two swabs, driven by a hydraulic motor, and the front right can be controlled independently, with a evasive reply function.
Brush diameter	850 mm
Brush angle	Tilt forward: 4-6 degrees Tilt: 4-7 degrees
<b>Sucking plate</b>	
Model	Double suction, hydraulic control, spring suspension.
Suction plate diameter	180 mm
Suction plate width	1800mm
<b>High pressure water system</b>	
Model	post pump
No.:	Germany PT36
System pressure	10 MPa
Speed	1150 r/min
Water valve model	Hydraulic pressure ball valve.
Water valve pressure	7 MPa
Spray nozzles model	High pressure washing type
Water filter	Mesh type
Water spray system	Electric diaphragm pumps, water filters, nozzles, etc.

**Truck tools**

No.:	ITEM	QTY	REMARK
1	Fire hose	2	
2	Fire wrench	1	
3	Water filter wrench	1	
4	High pressure water jet gun	1	
5	Spare tire	1	10.00R20
6	Manual hydraulic pump rocker	1	

**Truck spare parts**

No.:	ITEM	QTY	
1	Brushing	44	
2	Suction cup front rubber	1	
3	After the suction cup	1	
4	Fan belt	5	
5	Water pump belt	3	
6	Castors	4	
7	O-rings and combination washers		
8	Middle baffle rubber	1	
9	Seal	1	

**Major import configurations**

No.	Item	Type	Manufacturer
1	High pressure water pump	PF36	Germany PINFL
2	Automatic unloading after valve	VB200/150	Germany PINFL
3	Flood valve	VS200-180	Germany PINFL

4	Nozzle	B1/4MEG	America spray company
5	Liquid level switch	LME200B5/24V	Italy SOFIMA
6	CPU	6ES7 214-1AD23-0XB0	Germany SIEMENS
7	Digital quantity extension module	6ES7 223-1PH22-0XA0	Germany SIEMENS
8	The central distribution box	DVEC	America COOPER
9	Stepping motor	57H41-2.7-001	America Haydn
10	Switchgear cabinet	NE-AG	Korea HIBOX
11	Switch Control		Japan IDEC
12	Proximity switch	NBB10-30GM50-E0	PEPPRL FUCHS
13	Suction pipe		NORRES
14	Hydraulic motor	BMR125	Brevini
15	Hydraulic valve	SWH-G02-C4-D2H	Radix stemonae machines

High pressure road sweeper truck picture



High pressure road sweeper truck function display



High pressure road sweeper truck bulk order



High pressure road sweeper truck loading



**ITRUCK**

**Hubei iTruck Import and Export Trading Co., Ltd**

☎ 0086 19947597881

✉ alex@hbitruck.com

🌐 hbitruck.com

ROOM B1084 FLOOR 9TH-14TH, BUILDING A, BAoye CENTER, NO. 31ST, JIANSHE FIRST ROAD,  
QINGSHAN DISTRICT, WUHAN