

10cbm Wet And Dry Road Sweeper Truck High Pressure High Performance

Our Product Introduction

for more products please visit us on hbitruck.com

Basic Information

- Place of Origin: Hubei
- Brand Name: Dongfeng
- Certification: CCC
- Minimum Order Quantity: 1 unit
- Price: 78700\$
- Packaging Details: nude with waxing
- Delivery Time: 30-35 working days
- Payment Terms: L/C, D/A, D/P, T/T, Western Union, MoneyGram
- Supply Ability: 50 units per month



Product Specification

- Highlight: 10cbm Road Sweeper Truck, 10cbm street sweeper truck, Road Sweeper Truck High Performance



More Images



Product Description

10 cbm Wet and Dry High Pressure Road Sweeper Truck

Dry road sweeper: The dry road sweeper adopts a dry dust removal method, which means that the sweeper does not spray water during the dust removal process during cleaning operations. Therefore, a filter must be installed in the garbage bin or air duct of the dry road sweeper. During the cleaning operation of a dry road sweeper, the garbage with a high density that is sucked in from the suction port will naturally settle when entering the garbage bin due to the sharp decrease in wind speed in the bin. However, the small dust with a light density that is sucked in will be intercepted by the filter as it passes through the air flow. According to the different types of filters used by road sweepers, some dry road sweepers can use water spray to compress dust while others cannot use water spray to prevent filter blockage.

Wet sweeper: The wet sweeping vehicle adopts a wet dust removal method, which means that during the sweeping operation, in addition to using water spray to compress dust at the vertical sweeping point, the sweeping vehicle uses water spray to remove dust at the suction nozzle and suction pipe. The purpose of spraying dust at the vertical sweeping point is to prevent dust from coming out during the sweeping operation of the road sweeper, and to spray water at the suction nozzle and suction pipe for dust removal. The purpose is to moisten and aggregate

Our Product Introduction

small dust sucked through the suction nozzle into larger volume particles in the water mist, so as to settle in the garbage bin. So, a wet and dry dual-purpose road sweeper is a combination of the two, which can achieve waterless cleaning or sprinkle water to reduce dust in areas with high dust content before cleaning, achieving the function of wet road sweeping and reducing dust. It is widely used in road cleaning operations in urban streets, highways, airports, docks, and other places

Special performance

The dry and wet road sweeper equip the function of washing and sweeping car and vacuuming car in one, specializing in washing and planing roads, sand and gravel plants, coal plants, mixing stations, ports, Pier and other heavily polluted road conditions, can change the air duct at any time to change the dust reduction mode, can not need to use water dust reduction, no limited by the distance from the water source, it is an all-terrain, all-weather road sweeper, especially suitable for cold and dusty areas. Dry and wet dual use, four seasons all day Hou coverage!

Cleaning: auxiliary engine drive hydraulic oil pump and fan work. Hydraulic oil pump drive left and right sweep plate expansion, lifting Spin. The left and right sweep tray sweeps the garbage on both sides under the road sweeper and in front of the suction nozzle. The fan works to make the dustbin and suck The duct composed of the tube and the nozzle produces a high-speed air flow. Under the action of the air flow, the garbage is sucked into the nozzle and enters the garbage

In the box; The chassis engine drives the suction car to move forward, and the garbage swept in front of the suction nozzle continues to enter the suction nozzle. And a steady stream of suction into the trash, to achieve road cleaning.

Dust removal: The garbage box is designed in layers, and the clean air is discharged after the dust is filtered through the filter cylinder, and the granular garbage is straight Connect into the garbage box; When the road is wet or rainy, by switching the air duct, all the garbage is directly settled by gravity type into the garbage bin. The garbage and dust in the body of the suction carriage are separated by inertia, impact separation and filtration three-stage dust removal, the first dry dust removal mechanism is adopted to realize the automatic dust removal of the filter system

Main Technical specification

Overview	
Chassis model	DFH1180EX8
Wheelbase	4700mm
Front/rear suspension	1430/2150 mm
Chassis engine	B190-33
Spare engine	Yuchai 140hp
Chassis engine	140kw, 5900cc, 190hp
Spare engine	103 kW
Tire	10.00R20
Max upgrade angle	30%
Emission standard	Eu 3
Accelerating outside noise	≤84dB(A)
Max speed	103 km/h
Approach angle	20°
Departure angle	13°
Kurb weight	11980 kg
Whole weight	18000kg
Whole dimension	8650×2520×3250mm
Minimum height above ground	230 mm
High pressure clean	
Clean speed	3~15 Km/h
Clean width	2.4 m
Water pressure	10 MPa
Water pump flow	142 L/min
Clean and suction performance	
Cleaning efficiency	≥95%
Maximum suction particle size	110 mm
Clean and suction width	2.4 m
Max clean capacity	51000 m ² /h
Disc brush size	≥320 mm
Clean and suction speed	3-20 km/h
Tank capacity	
Water tank volume	7 m ³
Dust tank volume	4.8 m ³
Dump bin tilting angle	≥46°
Discharge door opening angle	≥85°
Hydraulic Hydraulic system	
Model	Open, electrical control
Major parts	Gear pump, hydraulic motor, hydraulic cylinder, solenoid valve
System pressure	16 MPa
Oil tank	60 L
Oil temperature	60 °C
Electrical system	
Model	DC24 V
Voltage	24 V
Battery	24 V
Sweeping devise	
Model	Center two swabs, driven by a hydraulic motor, and the front right can be controlled independently, with a evasive reply function.
Brush diameter	850 mm
Brush angle	Tilt forward: 4-6 degrees Tilt: 4-7 degrees
Sucking plate	
Model	Double suction, hydraulic control, spring suspension.
Suction plate diameter	180 mm
Suction plate width	1800mm
High pressure water system	
Model	post pump
No.:	Germany PT40
System pressure	10 MPa

Speed	1150 r/min
Water valve model	Hydraulic pressure ball valve.
Water valve pressure	7 MPa
Spray nozzles model	High pressure washing type
Water filter	Mesh type
Water spray system	Electric diaphragm pumps, water filters, nozzles, etc.

Truck tools

No.:	ITEM	QTY	REMARK
1	Fire hose	2	
2	Fire wrench	1	
3	Water filter wrench	1	
4	High pressure water jet gun	1	
5	Spare tire	1	10.00R20
6	Manual hydraulic pump rocker	1	

Truck spare parts

No.:	ITEM	QTY	
1	Brushing	2	
2	Suction cup front rubber	1	7 m
3	After the suction cup	1	
4	Fan belt	5	
5	Water pump belt	3	
6	Hand high pressure water gun	1	
7	O-rings and combination washers		
8	Middle baffle rubber	1	
9	Sealing strip	1	10 m
10	Edge card sealing strip	1	1 m
11	Straight card sealing strip	1	9 m
12	Bearings	2	
13	Vacuum hose	1	
14	Outer rings of suction cups	4	
15	Hand operate dust suction hose	1	6 m
16	Gloves	1	

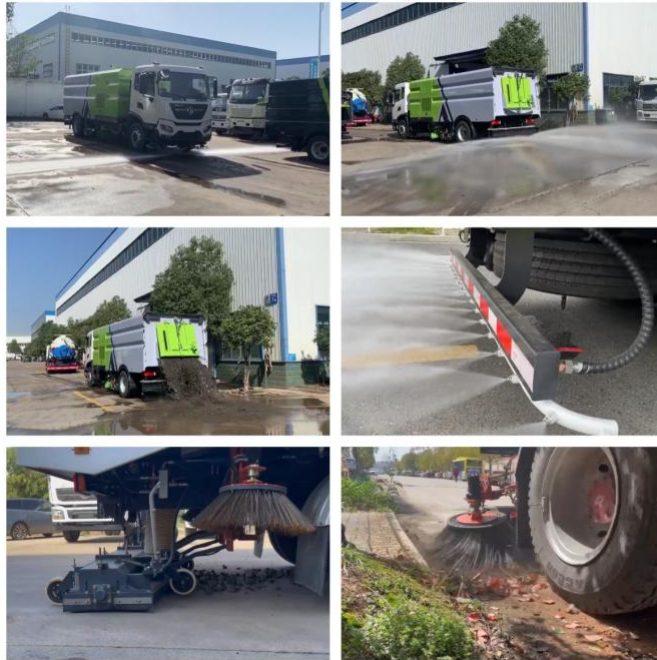
Major import configurations

No.	Item	Type	Manufacturer
1	High pressure water pump	PF40	Germany PINFL
2	Automatic unloading after valve	VB200/150	Germany PINFL
3	Flood valve	VS200-180	Germany PINFL
4	Nozzle	B1/4MEG	America spray company
5	Liquid level switch	LME200B5/24V	Italy SOFIMA
6	CPU	/	Germany STW
7	Digital quantity extension module	/	Germany STW
8	The central distribution box	DVEC	America COOPER
9	Stepping motor	57H41-2.7-001	America Haydn
10	Switch gear cabinet	NE-AG	Korea HIBOX
11	Switch Control		Japan IDEC
12	Proximity switch	NBB10-30GM50-E0	PEPPRL FUCHS
13	Suction pipe	/	NORRES
14	Hydraulic motor	BMR125	Brevini
15	Hydraulic valve	SWH-G02-C4-D2H	Radix stemonae machines

Wet and Dry High Pressure Road Sweeper Truck Picture



Wet and Dry High Pressure Road Sweeper Truck Function Display



Wet and Dry High Pressure Road Sweeper Truck Bulk Order



High pressure road sweeper truck loading



ITRUCK
SPECIAL VEHICLES

Hubei iTruck Import and Export Trading Co., Ltd

☎ 0086 19947597881

✉ alex@hbitruck.com

🌐 hbitruck.com

ROOM B1084 FLOOR 9TH-14TH, BUILDING A, BAOYE CENTER, NO. 31ST, JIANSHE FIRST ROAD,
QINGSHAN DISTRICT, WUHAN