

5 Tons Howo Euro 3 Euro 5 Flatbed Wrecker Truck With Knuckle Crane

Our Product Introduction

for more products please visit us on hbitruck.com

Basic Information

- Place of Origin: Hubei, China
- Brand Name: HOWO
- Minimum Order Quantity: 1
- Packaging Details: Nude
- Delivery Time: 15 days
- Supply Ability: 30 sets per month

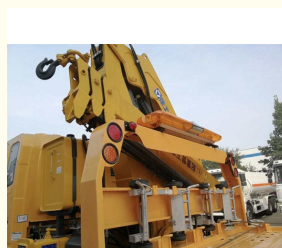


Product Specification

- Product Name: Flatbed Wrecker Truck
- Dimensions (L X W X H) (mm): 8300x2350x2600mm
- Condition: New
- Main Winch: 4 Tons
- Underlift: 2 Sections, 3 Tons
- Underlift Tow Rating: 6 Tons
- Operation: Both Sides Manual
- Remote Control: Optional
- Warranty: 1 Year
- Bed Dimension: 5600x2350mm
- Highlight: Euro 5 Flatbed Wrecker Truck, Knuckle Crane Flatbed Wrecker Truck, Knuckle Crane recovery tow truck



More Images



Product Description

4 TONS 5 TONS HOWO EURO 3 EURO 5 TOW TRUCKS WITH KNUCKLE CRANE

Product Description

The 4 tons flatbed wrecker truck is available in steel, with multiple deck length and width configurations and different structural deck capacity for more strength and durability on the job.

The truck brand options also available with ISUZU, Dongfeng, HOWO, JAC, FOTON, JMC, FAW, SHACMAN, IVECO, etc.

With Euro 2, Euro 3, Euro 5, Euro 6 emission.

With RHD, LHD.

With 4x2, 4x4.

Other special requirements you want.

Main Features

1. Bed Length 5.6 m. Capacity 4 Tons.
2. Optional Hitch Ball. Optional Remote Control.
3. Optional Material from Q235B, Q345, G70, NM500, Hardox 450 etc.

Truck Specs

| 4 Tons HOWO Flatbed Wrecker Truck with 3.2/4 Tons Knuckle Crane | |
|---|---|
| Overview | |
| Name | 4 Tons HOWO Flatbed Wrecker Truck with 3.2/4 Tons Knuckle Crane |
| Dimension (LxWxH) | 7450x2350x2575 (mm) |
| Total Mass | 9100Kg |
| Kerb Weight | 5560Kg |
| Passenger | 3 |
| The Parameters of Chassis | |
| Manufacture/Model | HOWO |
| Driving Type | 4*2 left hand drive |
| Wheel Base | 4500 mm |
| Gearbox | WLY646, six speed forward and one reverse, manual |
| Tyre | 7.50R16 |
| The Number of Tyre | 6+1(spare tyre) |
| Axle | Front 2.7 tons and rear 7.2 tons |
| Air Brake, AC, Power Steer | Equipped |
| The Parameters of Engine | |
| Manufacturer/Model | Yunnei/YN4102QBZL |
| Rated Power | 116hp |
| Fuel Type | Diesel |
| Displacement/Capacity | 3760ml |
| Emission Standard | Euro 2 |
| Cylinder | In-line/4 |
| Max. torque | 290N.m |
| Velocity | 3000rpm |

Body Specs

| 4 Tons Slide Type Tilt Tray | | |
|-----------------------------|----------------------------------|---|
| General Settings | Color | Customizable, electrophoresis painting is optional and extra USD400 |
| | Winch Capacity | 4 tons |
| | Lift Capacity | 4 tons |
| | Extension Capacity | 4 tons |
| | Underlift Capacity | 4 tons |
| | Platform Material | Q235B, 4mm thick |
| | Platform Type | Checkered |
| | Platform Dimension | 5600 x 2300 mm (customizable) |
| | Wireless Remote Control | Optional |
| | Subframe with Underlift | Match to chassis |
| Lights | Siren Long Lamp with Speaker | 1 pcs |
| | Sides Lights | 8 pcs |
| | Frame Lights with Lights Seat | 6 pcs |
| Hydraulic System | Bed Extension Cylinder with Seat | 1 pcs |
| | Bed Lift Cylinder with Seat | 2 pcs |

| | | |
|-------------|--|--|
| | Underlift lift Cylinder | 2 pcs |
| | Underlift Extension Cylinder | 1 pcs |
| | Hydraulic Winch | 1 pcs |
| | Hydraulic Pump | 1 pcs |
| | Hydraulic Multi Way Valve | 1 pcs |
| | Hydraulic Balance Valve | 2 pcs (1 for lift and 1 for underlift) |
| | Hydraulic Hose | 1 set |
| | Hydraulic Hose Containment | 1 set |
| | Hose Sleeve | 1 pcs |
| | Manual Control with Stainless Steel Seat | 2 sets (on both sides) |
| | Oil Tank | 1 pcs |
| Accessories | Auxiliary Wheels | 2 pcs |
| | Straps | 4 pcs |
| | Toolbox | 2 pcs |
| | Wheel Grids | 2 pcs |
| | L arms | 2 pcs |
| | Fence | 2 pcs |
| | Mudflap | 2 pcs |
| | Lamp Frame | 1 pcs |
| | Tow Chain | 1 pcs |
| | Frame and Lights Bolts | 1 set |
| | Toolbox and Fence Brackets Square Tube | 1 set |



ITRUCK
SPECIAL VEHICLES

Hubei iTruck Import and Export Trading Co., Ltd

☎ 0086 19947597881

✉ alex@hbitruck.com

🌐 hbitruck.com

ROOM B1084 FLOOR 9TH-14TH, BUILDING A, BAOYE CENTER, NO. 31ST, JIANSHE FIRST ROAD,
QINGSHAN DISTRICT, WUHAN