

## 4x2 Euro 3 Foton 8 Tons Tilt Bed Tow Truck Flatbed Tilt Truck

Our Product Introduction

for more products please visit us on [hbitruck.com](http://hbitruck.com)

### Basic Information

- Place of Origin: Hubei, China
- Brand Name: Foton
- Minimum Order Quantity: 1
- Packaging Details: Nude
- Delivery Time: 15 days
- Supply Ability: 30 sets per month

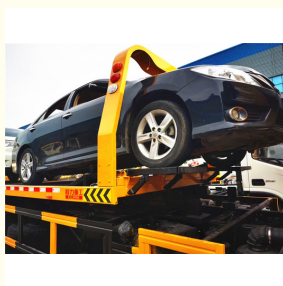


### Product Specification

- Product Name: Flatbed Wrecker Truck
- Dimensions (L X W X H) (mm): 10300x2550x2800mm
- Condition: New
- Main Winch: 8 Tons
- Underlift: 3 Sections, 8 Tons
- Underlift Tow Rating: 16 Tons
- Operation: Both Sides Manual
- Remote Control: Optional
- Warranty: 1 Year
- Bed Dimension: 8000x2500mm
- Highlight: 8 Tons Tilt Bed Tow Truck, Euro 3 Tilt Bed Tow Truck, Flatbed Tilt Truck 8 Tons



### More Images



## Product Description

### 4X2 EURO 3 FOTO 8 TONS TILT BED TRUCK TILT TRAY WRECKER TOW TRUCK

#### Product Description

The 8 tons flatbed wrecker truck is available in steel, with multiple deck length and width configurations and different structural deck capacity for more strength and durability on the job.

The truck brand options also available with ISUZU, Dongfeng, HOWO, JAC, FOTON, JMC, FAW, SHACMAN, IVECO, etc.

With Euro 2, Euro 3, Euro 5, Euro 6 emission.

With RHD, LHD.

With 4x2, 4x4.

Other special requirements you want.

#### Main Features

1. Bed Length around 8 m. Capacity 8-10 Tons.
2. Optional Hitch Ball. Optional Remote Control.
3. Optional Material from Q235B, Q345, G70, NM500, Hardox 450 etc.

#### Truck Specs

8 Tons Foton Flatbed Wrecker Truck	
Overview	
Name	8 Tons Foton Flatbed Wrecker Truck
Dimension(LxWxH)	10050x2500x2855(mm)
Total Mass	16510Kg
Rated Payload	12000Kg
Kerb Weight	4510Kg
Passenger	3
Approach/Departure Angle	30/23
The Parameters of Chassis	
Manufacture/Model	Foton
Driving Type	4*2 LHD/RHD
Wheel Base	5150 mm
Gearbox	FAST 8JS85T, eight speed forward and two reverse, manual
Front/Rear Track	1914/1800(mm)
Tyre	10.00R20
The Number of Tyre	6+1 (spare tyre)
Front/Rear Suspension	1250/2320(mm)
Leaf Spring Number	4+3
Fuel Tank	260L Aliminum
Power Steer, AC, Air Brake, MP3, ABS, etc	Equipped
The Paremeters of Engine	
Manufacturer/Model	Cummins
Rated Power	210hp
Fuel Type	Diesel oil
Displacement/Capacity	5900ml
Emission Standard	Euro 3
Cylinder	In-line/4/intercooling/turbo charge/Bosch common rail/pressure direct injection
Max. torque	560N.m
Velocity	2800rpm

#### Body Specs

### 8 - 10 Tons Slide Type Tilt Tray

General Settings	Color	Customizable, electrophoresis painting is optional
	Winch Capacity	8 - 10 tons
	Lift Capacity	8 - 10 tons
	Extension Capacity	8 - 10 tons
	Underlift Capacity	8 tons (towing up to 16 tons)
	Platform Material	Q235B, 6 - 8 mm thick
	Platform Type	Smooth or checkered
	Platform Dimension	8000-9000 x 2500 mm
	Wireless Remote Control	Equipped
	Subframe with Underlift	Equipped and match to chassis
Lights	Siren Long Lamp with Speaker	1 pcs
	Sides Lights	10 pcs
	Frame Lights with Lights Seat	8 pcs
Hydraulic System	Bed Extension Cylinder with Seat	1 pcs
	Bed Lift Cylinder with Seat	2 pcs
	Supporting Legs Cylinder	2 pcs
	Hydraulic Winch	1 pcs
	Hydraulic Pump	1 pcs
	Hydraulic Multi Way Valve	1 pcs
	Hydraulic Balance Valve	2 pcs (1 for lift and 1 for underlift)
	Hydraulic Hose	1 set
	Hydraulic Hose Containment	1 set
	Hose Sleeve	1 pcs
	Manual Control with Stainless Steel Seat	2 sets (on both sides)
	Oil Tank	1 pcs
Accessories	Wheel Trolleys	2 pcs
	Straps	4 pcs
	Toolbox	2 pcs
	Wheel Grids	2 pcs
	L arms	2 pcs
	Fence	2 pcs
	Mudflap	2 pcs
	Lamp Frame	1 pcs
	Bed Position Limit	1 set
	Frame and Lights Bolts	1 set
	Toolbox and Fence Brackets Square Tube	1 set
	Container Pins	4 pcs



**ITRUCK**  
SPECIAL VEHICLES

**Hubei iTruck Import and Export Trading Co., Ltd**



0086 19947597881



alex@hbitruck.com



hbitruck.com

ROOM B1084 FLOOR 9TH-14TH, BUILDING A, BAOYE CENTER, NO. 31ST, JIANSHE FIRST ROAD,  
QINGSHAN DISTRICT, WUHAN