

Isuzu ELF XCMG Straight Arm 5 Ton Truck Mounted Crane For Municipal Construction

Our Product Introduction

for more products please visit us on hbitruck.com

Basic Information

- Place of Origin: Hubei
- Brand Name: ISUZU
- Certification: ccc
- Model Number: QL1110ANKAY
- Minimum Order Quantity: 1
- Price: 43700
- Packaging Details: nude with waxing
- Delivery Time: 30-35 working days
- Payment Terms: L/C, T/T, Western Union
- Supply Ability: 50 units per month



Product Specification

- Chassis: ISUZU
- Dimension: 7200x2300x3450 Mm
- Crane: 5 Tons XCMG
- Wheel Base: 3815 Mm
- Tyre Model: 235/75R17.5
- Emission Standard: Eu 6
- Rear Bucket: 4000x2000x500 Mm
- Dump Function: Yes
- Crane Max Outreach: 11 M
- Max Lifting Height: 12.5 M
- Highlight: Municipal Construction Truck Mounted Crane, Municipal Construction 5 ton crane truck, Isuzu ELF XCMG S Truck Mounted Crane



More Images



Our Product Introduction

Product Description

ISUZU 700P 190hp Engine 5 tons XCMG Straight arm truck mounted crane

The official name of the truck mounted crane is the truck mounted crane transport vehicle, which is a device that uses hydraulic lifting and telescopic systems to lift, rotate, and hoist goods. It is usually assembled on cargo trucks. It is widely used for the hoisting and transportation of infrastructure materials and other equipment in municipal construction, coal mining engineering, landscaping, and other fields.

Truck mounted crane is a type of transportation vehicle that combines a truck mounted crane and a chassis. It is composed of a crane arm, a turntable, a frame, legs, and other parts. The mechanical action of the crane is achieved through the actions of mechanisms such as amplitude, expansion, rotation, and hoisting, and the lifting operation is achieved through the combination of different actions.

Applicable working conditions: In traditional areas of Dongfeng, high-density goods such as iron powder and iron ore are loaded and transported, suitable for poor road conditions such as mountainous roads and construction site roads.

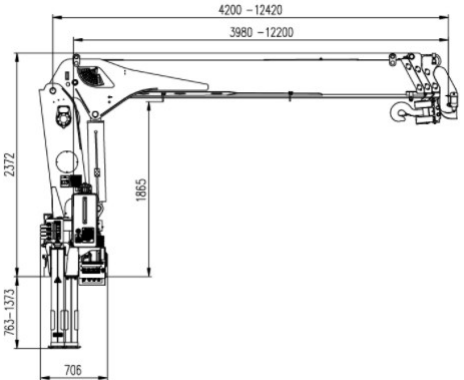
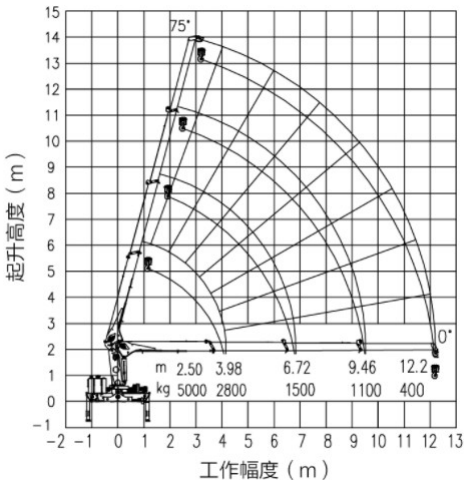
Main Technical specification

Overview

Name	5 tons Isuzu Crane Truck
Dimension(LxWxH)	7200x2300x3450 mm
Total Mass	11500 kg
Rated Payload	5000 kg
Kerb Weight	6500 kg
Passenger	3
Approach/Departure Angle	16°/12 °
The Parameters of Chassis	
Manufacture/Model	QL1100A8KAY
Driving Type	4x2
Wheel Base	3815 mm
Gearbox	MLD6
Front/Rear Track	2011/1860 mm
Tyre model	235/75R17.5
The Number of Tyre	6+1 (spare tyre)
Front/Rear Suspension	1340/2560 mm
Axles Loading	Front Man 4T Rear Man 7T
Oil Tank	200L Iron
The Parameters of Engine	
Manufacturer/Model	ISUZU/ 4HK1-TC51
Rated Power	140kw/190hp
Fuel Type	Diesel oil
Displacement/Capacity	5193 ml
Emission Standard	Eu 5
Cylinder	4
Max. Torque/ speed	510N.m/ 1600rpm
Velocity	2600 rpm
The Parameters of Equipment	
Color/Logo	Customized
Rear bucket	4000x2000x500 mm
Dump function	Yes
Crane	Xcmg 5 tons straight arm, SQ125-4

XCMG 5 tons fold arm crane specifications

Model	SQS125 (5 tons, 4 arms)
Max loading weight	5,000 kg
Max torque	125 kN.m
Max outreach	11 m
Max lifting height	12.5 m
Oil tank capacity	90 L
Max pressure of hydraulic system	20 mpa
Recommended pump capacity	32 L/min
Installation space	900 mm
Slewing angle	360 °
Crane weight	2260 kg
Stabilizer spread	2280-5100 mm



ISUZU 700P Crane Truck Picture



Crane Truck Working Stock



Crane Truck Working Working



Export



ITRUCK
SPECIAL VEHICLES

Hubei iTruck Import and Export Trading Co., Ltd

☎ 0086 19947597881

✉ alex@hbitruck.com

🌐 hbitruck.com

ROOM B1084 FLOOR 9TH-14TH, BUILDING A, BAOYE CENTER, NO. 31ST, JIANSHE FIRST ROAD,
QINGSHAN DISTRICT, WUHAN