

10000 Liters Capacity Truck Mounted Bitumen Sprayer With Dongfeng Chassis

Our Product Introduction

for more products please visit us on hbitruck.com

Basic Information

- Place of Origin: Hubei
- Brand Name: DONFFENG
- Certification: ccc
- Minimum Order Quantity: 1
- Price: 52700\$
- Packaging Details: nude with waxing
- Delivery Time: 30-35 working days
- Payment Terms: L/C, T/T, Western Union
- Supply Ability: 50 units per month

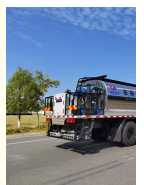


Product Specification

- Name: Asphalt Spray Truck
- Chassis Brand: Dongfeng
- Volume: 10000 Liters
- Wheelbase: 4700 Mm
- Engine: B190-33
- Tire: 10.00R20
- Air Condition: Yes
- Spray Width: 4.5 M
- Spray Nozzles: 36
- Heating: Burner + Heat Transfer Oil Automatic Heating
- Highlight: Dongfeng Chassis Truck Mounted Bitumen Sprayer, 10000 Liters Truck Mounted Bitumen Sprayer, 10000 Liters asphalt sprayer truck



More Images



Our Product

Product Description

Dongfeng 10,000 liters asphalt spray truck

Asphalt spray truck introduce

Asphalt distributor truck is a type of black road construction machinery, which is the main equipment for the construction of highways, urban roads, airports, and ports. When using asphalt penetration method, asphalt layer surface treatment method to construct asphalt pavement or maintain asphalt or residual oil pavement, asphalt

distribution vehicles can be used to transport and distribute liquid asphalt (including hot asphalt, emulsified asphalt, and residual oil). In addition, it can also supply asphalt binder to locally loose soil for the construction of asphalt stabilized soil pavement or pavement base. When constructing the permeable layer, waterproof layer, and bonding layer of the bottom layer of asphalt pavement on high-grade highways, high viscosity modified asphalt, heavy traffic asphalt, modified emulsified asphalt, emulsified asphalt, etc. can be sprayed. It can also be used for asphalt overlay and spraying in highway maintenance, as well as for the construction of asphalt roads at the county and township levels for implementing layered paving technology.

The intelligent asphalt distributor consists of a vehicle chassis, asphalt tank body, asphalt pumping and spraying system, thermal oil heating system, hydraulic system, combustion system, control system, pneumatic system, and operating platform

Asphalt spray truck introduction structure

(1) Asphalt tank

It consists of an inner liner, insulation material, outer shell, partition, combustion chamber, asphalt pipeline inside the tank, thermal oil pipeline, air storage cylinder, fuel filling port, capacity meter, decorative panel, etc. The tank body is an elliptical cylinder, with two layers of steel plates welded together inside and outside, filled with aluminum silicate insulation material between the two layers, with a thickness of 50-100mm, and covered with stainless steel plates.

There is a sink groove at the bottom to facilitate the absorption of asphalt inside the tank. There are 5 mounting feet welded to the auxiliary beam at the bottom of the tank, which are then fixed to the frame. The outer layer of the combustion chamber is a heat transfer oil heating chamber, and a row of heat transfer oil heating tubes are installed at the bottom. The capacity meter is used to indicate the height of asphalt inside the tank.

(2) Power transmission system

Composed of power take-off, pump transmission device, hydraulic system, etc. Generally, the hydraulic pump is driven by a power take-off installed on the output port of the chassis engine or transmission, providing necessary power for the asphalt spraying device. The hydraulic system consists of a hydraulic pump, relief valve, directional valve, hydraulic motor, hydraulic pipeline, etc.

(3) Asphalt pump and pipeline system

Composed of asphalt pump, filter, valve, spray pipeline, cylinder nozzle assembly, etc. By using different combinations of valves to control the flow direction of liquid asphalt in pipelines, the main functions are as follows: self-priming asphalt injection, rear pipe spraying, handheld nozzle spraying, circulation, suction, cleaning, etc.

(4) Asphalt heating and thermal oil system

It consists of a combustion heating system and a thermal oil circulation heating system.

(5) Asphalt pipeline cleaning system

There are two parts: diesel cleaning and high-pressure air flushing. The diesel cleaning part consists of a diesel tank, an inlet copper ball valve, and pipelines, while the high-pressure air flushing part consists of an air reservoir, a one-way valve, an air valve, etc.

(6) Electrical and control system

The electrical control system is divided into two parts: DC circuit and AC circuit. The DC circuit consists of a power take-off, a reducer, a cooler, a hydraulic directional valve, a rear nozzle lift, a rear work light control circuit, and an automatic control system circuit; The communication circuit consists of a generator, a burner, and a thermal oil motor circuit.

Main Technical specification

Item name	Dongfeng Asphalt Truck
Dimension	8300×2550×3450 mm
Total weight	18000 kg
Curb weight	9650 kg
Loading capacity	8200 kg
Wheelbase	4500 mm
Chassis brand	Dongfeng
Tire specification	10.00R20
Number of tires	6
Fuel type	Diesel
Engine model	B190-33

Engine displacement	5900 cc
Engine power	140 kw/ 190 hp
Engine rate speed	2500 rpm
Engine max torque / speed	640 N.m at 1500 rpm
Standard configuration	<p>1. The asphalt pump adopts QGB950 (high viscosity asphalt pump). 2. Hydraulic system: proportional valve (Taiwan EFBG-03-160-HF), automatic reversing valve and relief valve, asphalt pump hydraulic drive motor model 05-110-BD31; Hydraulic pump: CBQ550-L or GPC4-50R after the engine, radiator using Sunrise brand.</p> <p>3. Control mode: cab touch screen computer intelligent control, control system (Germany Siemens); 36 asphalt intelligent nozzles (one control one);</p> <p>4. Heating method: thermal oil automatic heating + burner G20 (imported from Italy).</p> <p>5. Spreading range: 0.2-2.0L/ ;</p> <p>6. Spreading width: 4.5 meters; Six meters, 48 nozzles and 10 grand.</p> <p>7. Spraying medium: emulsified asphalt, hot asphalt, modified asphalt, etc.</p>

Dongfeng 10,000 liters Asphalt Truck Picture



Asphalt truck store site



Asphalt truck working at site



Export



ITRUCK
SPECIAL VEHICLES

Hubei iTruck Import and Export Trading Co., Ltd

☎ 0086 19947597881

✉ alex@hbitruck.com

🌐 hbitruck.com

ROOM B1084 FLOOR 9TH-14TH, BUILDING A, BAOYE CENTER, NO. 31ST, JIANSHE FIRST ROAD,
QINGSHAN DISTRICT, WUHAN