

Dongfeng 190hp Engine Truck Mounted Crane 8 Ton Crane Truck For Transportation

Our Product Introduction

for more products please visit us on hbitruck.com

Basic Information

- Place of Origin: Hubei
- Brand Name: DONGFENG
- Certification: CCC
- Model Number: DFL1140B
- Minimum Order Quantity: 1
- Price: 47800
- Packaging Details: nude with waxing
- Delivery Time: 30-35 working days
- Payment Terms: L/C, T/T, Western Union
- Supply Ability: 50 units per month

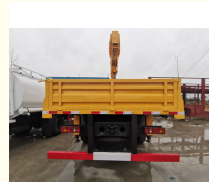
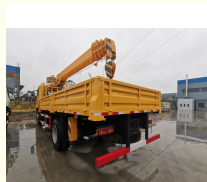


Product Specification

- Item Name: Crane Truck
- Chassis: Dongfeng
- Crane Loading: 8-10 Tons
- Crane Type: Straight Arm
- Support Leg: 4
- Wheelbase: 4500 Mm
- Lifting Height: 15.5m
- Working Radius: 13.5m
- Crane Model: SQS200
- Crane Brand: XCMG
- Highlight: 190hp Engine Truck Mounted Crane, 190hp Engine 8 Ton Crane Truck, Dongfeng 8 Ton Crane Truck



More Images



Product Description

Dongfeng 190hp Engine 8 tons XCMG Straight arm truck mounted crane truck

The official name of the truck mounted crane is the truck mounted crane transport vehicle, which is a device that uses hydraulic lifting and telescopic systems to lift, rotate, and hoist goods. It is usually assembled on cargo trucks. It is widely used for the hoisting and transportation of infrastructure materials and other equipment in municipal construction, coal mining engineering, landscaping, and other fields.

Truck mounted crane is a type of transportation vehicle that combines a truck mounted crane and a chassis. It is composed of a crane arm, a turntable, a frame, legs, and other parts. The mechanical action of the crane is achieved through the actions of mechanisms such as amplitude, expansion, rotation, and hoisting, and the lifting operation is achieved through the combination of different actions.

Applicable working conditions: In traditional areas of Dongfeng, high-density goods such as iron powder and iron ore are loaded and transported, suitable for poor road conditions such as mountainous roads and construction site roads.

Main Technical specification

| Overview | |
|----------|-----------------------------|
| Name | 8 tons Dongfeng Crane Truck |

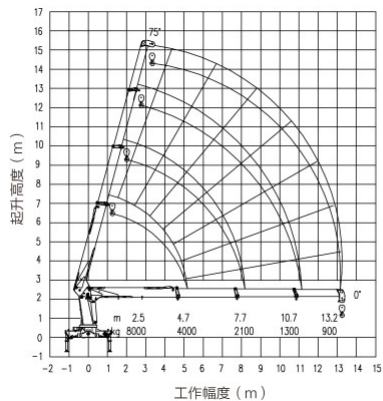
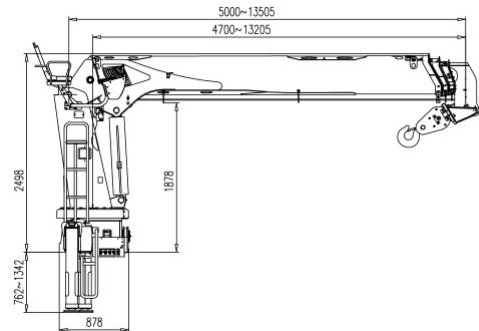
Our Product Introduction

for more products please visit us on hbtruck.com

| | |
|------------------------------------|-------------------------------------|
| Dimension(LxWxH) | 9000x2500x3750 mm |
| Total Mass | 18000 kg |
| Rated Payload | 10800 kg |
| Kerb Weight | 7200 kg |
| Passenger | 3 |
| Approach/Departure Angle | 16°/12 ° |
| The Parameters of Chassis | |
| Manufacture/Model | DFL1140B |
| Driving Type | 4x2 |
| Wheel Base | 4500 mm |
| Gearbox | DF6S900 |
| Front/Rear Track | 2011/1860 mm |
| Tyre model | 10.00R20 |
| The Number of Tyre | 6+1 (spare tyre) |
| Front/Rear Suspension | 1350/2200 mm |
| Axles Loading | Front Man 6 T Rear Man 10 T |
| Oil Tank | 250L Iron |
| The Parameters of Engine | |
| Manufacturer/Model | Cummins /B190-33 |
| Rated Power | 140kw/190hp |
| Fuel Type | Diesel oil |
| Displacement/Capacity | 5900 ml |
| Emission Standard | Eu 3 |
| Cylinder | 6 |
| Max. Torque/ speed | 650N.m/ 1600rpm |
| Velocity | 2500 rpm |
| The Parameters of Equipment | |
| Color/Logo | Customized |
| Rear bucket | 6000x2200x500 mm |
| Dump function | NO |
| Crane | Xcmg 8 tons straight arm, MSQS200-4 |

XCMG 8 tons straight arm crane specifications

| | |
|----------------------------------|----------------------------|
| Model | MSQS200-4 (8 tons, 4 arms) |
| Max loading weight | 8,000 kg |
| Max torque | 200 kN.m |
| Max outreach | 13.5 m |
| Max lifting height | 15.5 m |
| Oil tank capacity | 200 L |
| Max pressure of hydraulic system | 26 mpa |
| Recommended pump capacity | 63/50+50 L/min |
| Installation space | 1200 mm |
| Slewing angle | 360 ° |
| Crane weight | 3450 kg |
| Stabilizer spread | 2300-5700 mm |
| Support leg | yes |



DONGFENG Crane Truck Picture



Crane Truck Working Stock



Crane Truck Working Working



Export



ITRUCK
SPECIAL VEHICLES

Hubei iTruck Import and Export Trading Co., Ltd

☎ 0086 19947597881

✉ alex@hbitruck.com

🌐 hbitruck.com

ROOM B1084 FLOOR 9TH-14TH, BUILDING A, BAOYE CENTER, NO. 31ST, JIANSHE FIRST ROAD,
QINGSHAN DISTRICT, WUHAN