

## ISUZU NPR KV100 115hp Engine 2 Ton Crane Truck / Truck Mounted Hydraulic Crane

Our Product Introduction

### Basic Information

- Place of Origin: Hubei
- Brand Name: ISUZU
- Certification: ccc
- Model Number: QL1044A6HAY
- Minimum Order Quantity: 1
- Price: 28700
- Packaging Details: nude with waxing
- Delivery Time: 30-35 working days
- Payment Terms: L/C, T/T, Western Union
- Supply Ability: 50 units per month



### Product Specification

- Item Name: Crane Truck
- Chassis: ISUZU
- Crane Loading: 2 Tons
- Crane Type: Straight Arm
- Support Leg: 2
- Wheelbase: 3360 Mm
- Lifting Height: 9 M
- Working Radius: 8 M
- Crane Model: SQS42
- Crane Brand: XCMG
- Highlight: 115hp Engine 2 Ton Crane Truck,  
115hp Engine Truck Mounted Hydraulic Crane,  
ISUZU NPR 2 Ton Crane Truck



### More Images



for more products please visit us on [hbitruck.com](http://hbitruck.com)

## Product Description

### ISUZU KV100 115hp Engine 2 tons XCMG Straight arm truck mounted crane

The official name of the truck mounted crane is the truck mounted crane transport vehicle, which is a device that uses hydraulic lifting and telescopic systems to lift, rotate, and hoist goods. It is usually assembled on cargo trucks. It is widely used for the hoisting and transportation of infrastructure materials and other equipment in municipal construction, coal mining engineering, landscaping, and other fields.

Truck mounted crane is a type of transportation vehicle that combines a truck mounted crane and a chassis. It is composed of a crane arm, a turntable, a frame, legs, and other parts. The mechanical action of the crane is achieved through the actions of mechanisms such as amplitude, expansion, rotation, and hoisting, and the lifting operation is achieved through the combination of different actions.

**Applicable working conditions:** In traditional areas of Dongfeng, high-density goods such as iron powder and iron ore are loaded and transported, suitable for poor road conditions such as mountainous roads and construction site roads.

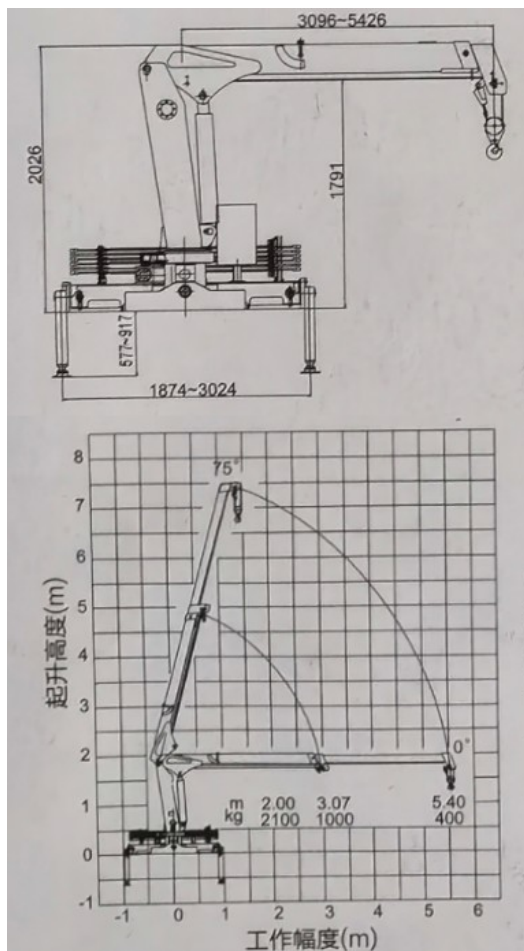
#### Main Technical specification

Overview	
Name	2 tons Isuzu Crane Truck
Dimension(LxWxH)	5990x2200x2750 mm
Total Mass	6350 kg
Rated Payload	3000 kg
Kerb Weight	3350 kg
Passenger	3
Approach/Departure Angle	23°/13 °
The Parameters of Chassis	
Manufacture/Model	QL1070A6HAY
Driving Type	4x2
Wheel Base	3360 mm
Gearbox	MSB5
Front/Rear Track	1640/1655 mm
Tyre model	7.00R16
The Number of Tyre	6+1 (spare tyre)
Front/Rear Suspension	1120/2095 mm
Axles Loading	Front Man 2 T Rear Man 4 T
Oil Tank	200L Iron
The Parameters of Engine	
Manufacturer/Model	ISUZU/ 4KH1CN5LS
Rated Power	72kw/98hp
Fuel Type	Diesel oil
Displacement/Capacity	2999 ml
Emission Standard	Eu 5
Cylinder	4
Max. Torque/ speed	220N.m/ 1700rpm
Velocity	3400 rpm
The Parameters of Equipment	
Color/Logo	Customized
Rear bucket	3500x2000x500 mm
Dump function	Yes
Crane	Xcmg 2 tons straight arm, SQS42

#### XCMG 2 tons straight arm crane specifications

Model	SQS42 (2 tons, 3 arms)
Max loading weight	2,000 kg
Max torque	42 kN.m
Max outreach	8 m
Max lifting height	9 m
Oil tank capacity	25 L
Max pressure of hydraulic system	16 mpa
Recommended pump capacity	20 L/min
Installation space	850 mm
Slewing angle	360 °
Crane weight	950 kg
Stabilizer spread	1874-3024 mm

## XCMG 2 tons straight arm crane specifications



ISUZU KV100 Crane Truck Picture





*Crane Truck Working Stock*



*Crane Truck Working Working*



## Export







**Hubei iTruck Import and Export Trading Co., Ltd**



0086 19947597881



alex@hbitruck.com



hbitruck.com

ROOM B1084 FLOOR 9TH-14TH, BUILDING A, BAOYE CENTER, NO. 31ST, JIANSHE FIRST ROAD,  
QINGSHAN DISTRICT, WUHAN