

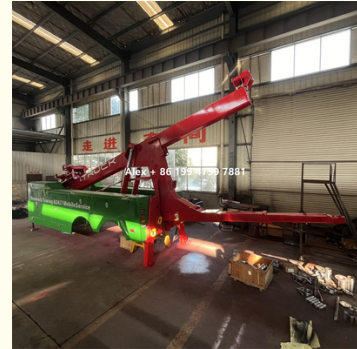
30 TONS RECOVERY TRUCK BOOM WITH 25 TONS UNDERLIFT DOUBLE 15 TONS WINCHES HYDRAULIC PARTS

Our Product Introduction

for more products please visit us on hbitruck.com

Basic Information

- Place of Origin: Hubei, China
- Brand Name: iTruck
- Minimum Order Quantity: 1
- Price: \$29,000.00 - 30,000/units
- Packaging Details: Nude, covered with film protection
- Delivery Time: 75 days
- Supply Ability: 5 sets per month



Product Specification

- Product Name: Integrated Wrecker Truck Body
- Transmission Type: Manual
- Dimensions (L X W X H) (mm): Customs Made
- Condition: New
- WheelBase: As Required
- Subframe: Equipped
- Main Winch: 15 - 25 Tons, 2 Pcs
- Underlift: 3 Sections, Optional 4
- Underlift Tow Rating: 28 Ton
- Operation: Both Sides Manual
- Remote Control: Optional
- Warranty: 2 Year
- Highlight: Side Puller INTEGRATED RECOVERY TOW TRUCK



More Images



Our Product

Product Description

30 TONS RECOVERY TRUCK BOOM WITH 25 TONS UNDERLIFT DOUBLE 15 TONS WINCHES HYDRAULIC PARTS

Product Description

The heavy duty integrated series have different capacities from 20 tons to 50 tons.

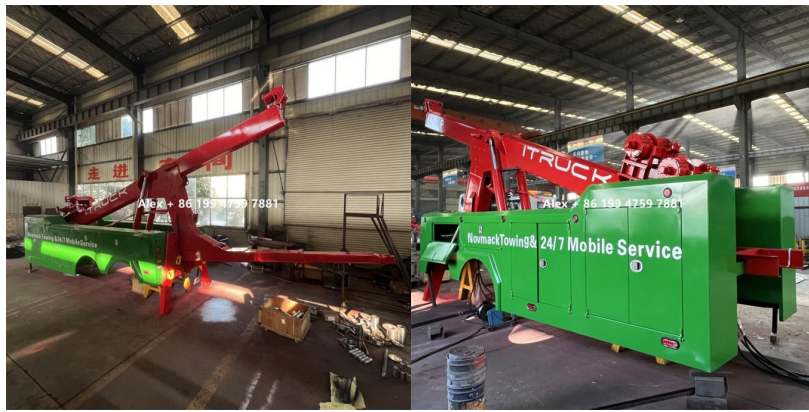
The heavy duty integrated wrecker features a 66,000 lb. - 111,000 lb. 2- or 3-stage wrecker boom, corrosion, resistant body and optional 3- or 4-stage underlifts – all designed with strength and performance in mind.

Main Features

1. 15 Tons / 33,200 lbs. - 25 Tons / 55,000 lbs. Planetary Winch, 2 Pcs. Total 30 Tons / 66,600 lbs - 50 Tons / 111,000 lbs.
2. 28 Tons / 62,200 lbs. Underlift Capacity, Tow Rate At Least 56 Tons / 124,000 lbs.
3. Optional Remote Control
4. Sides Tool Boxes
5. Optional Front Legs and Side Pullers

Specs

Heavy Duty Integrated Wrecker Body					
No.	Item	Content	Details	Details	Details
1	Name		30 Tons Wrecker Body	40 Tons Wrecker Body	50 Tons Wrecker Body
2	Winches		2×15 Tons Main Winches	2×20 Tons Main Winches	2×25 Tons Main Winches
3	Under lift	Under lift	G70 material, 3-4 stage		
4	Boom	Boom	G70 material, 2-3 stage, hexagon		
5	Legs	Rear	Hydraulic rear supporting legs		
6	Frame	LED Lights Frame, full size			
7	Toolbox	On Both Sides	Carbon steel Q345R, with stainless steel handles		
8	Hook-Ups	Air and Electrical Hook-Ups	12V or 24V		
9	Control	Remote Wireless Control	Button remote control		
		Hand Manual Control	On Lift and Right Sides, English Indication		
10	Hydraulic Parts	Hydraulic Pump	Double Pump		
		Hydraulic Hose			
		Hydraulic Connector			
		Valves	Italy		
		Cylinders			
11	Attachments	5 Sets of Forks	4 sets for axle, 1 set for suspension		
		U shape tyres holder	1 set		
		Safety Chains	2 pcs		
12	Painting and Indication	Electrophoresis Painting	Tool Box EP painting, other normal painting		
		Surface Painting	Epoxy Resin		
		Indication	English Indication and Marks		
		Packaging	Boxes and under lift protected for the painting		
Specifications					
1	Underlift	Retracted Lifting Capacity	25000	28000	28000
		Retracted Length	1746	1746	1746
		Extended Lifting Capacity	7310	7310	7310
		Extended Length	3110	3410	3410
		Undelift Tilt	-10	-10	-10
		Towing Capacity	50	56	56
2	Boom	Retracted Lifting Capacity (45°)	30	40	50
		Extended Lifting Capacity (45°)	8	10	11.5
		Max. Lifting Tilt	33	33	33
		Max. Lifting Height	7022	7022	7022
3	Main Winches	Quantity	2	2	2
		Pulling Power	15	20	25
		Type	Planetary	Planetary	Planetary
		Steel Wire Length	45	45	45
		Steel Wire Diameter	18	26	28



Hubei iTruck Import and Export Trading Co., Ltd

☎ 0086 19947597881

✉ alex@hbitruck.com

🌐 hbitruck.com

ROOM B1084 FLOOR 9TH-14TH, BUILDING A, BAOYE CENTER, NO. 31ST, JIANSHE FIRST ROAD,
QINGSHAN DISTRICT, WUHAN