

3.2 Ton Dongfeng Truck 4x2 Right Hand Driving Mounted Crane for Municipal Construction and Poor Road Conditions

Our Product Introduction

for more products please visit us on hbitruck.com

Basic Information

- Place of Origin: Hubei
- Brand Name: DONGFENG
- Certification: CCC
- Model Number: DFL1140B
- Minimum Order Quantity: 1
- Price: 23200
- Packaging Details: nude with waxing
- Delivery Time: 30-35 working days
- Payment Terms: L/C, T/T, Western Union
- Supply Ability: 50 units per month

Product Specification

- Item Name: Crane Truck
- Chassis: Dongfeng
- Crane Loading: 3.2 Tons
- Crane Type: Straight Arm
- Support Leg: 2
- Wheelbase: 3308 Mm
- Lifting Height: 9.5m
- Working Radius: 7.7m
- Crane Model: SQS68
- Crane Brand: XCMG
- Drive Model: 4x2
- Highlight: 4x2 Truck Mounted Crane, Poor Road Conditions Truck Mounted Crane, Municipal Construction Truck Mounted Crane

More Images

Our Product Introduction

Product Description

3.2 Ton Dongfeng Truck 4x2 Right Hand Driving Mounted Crane for Municipal Construction and Poor Road Conditions

The official name of the truck mounted crane is the truck mounted crane transport vehicle, which is a device that uses hydraulic lifting and telescopic systems to lift, rotate, and hoist goods. It is usually assembled on cargo trucks. It is widely used for the hoisting and transportation of infrastructure materials and other equipment in municipal construction, coal mining engineering, landscaping, and other fields.

Truck mounted crane is a type of transportation vehicle that combines a truck mounted crane and a chassis. It is composed of a crane arm, a turntable, a frame, legs, and other parts. The mechanical action of the crane is achieved through the actions of mechanisms such as amplitude, expansion, rotation, and hoisting, and the lifting operation is achieved through the combination of different actions.

Applicable working conditions: In traditional areas of Dongfeng, high-density goods such as iron powder and iron ore are loaded and transported, suitable for poor road conditions such as mountainous roads and construction site roads.

Main Technical specification

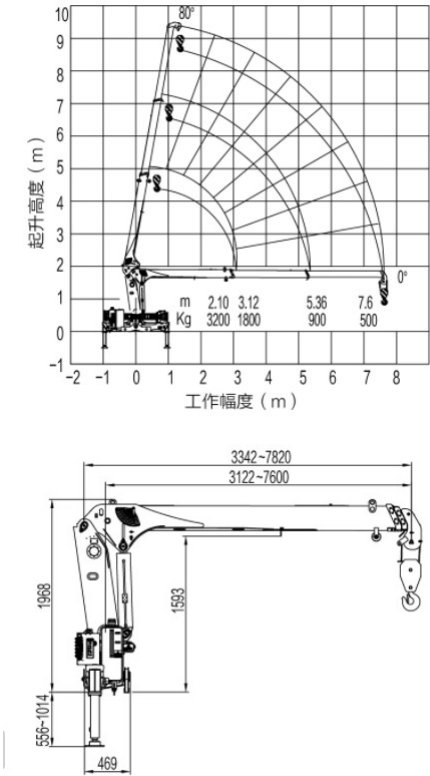
Overview

for more products please visit us on hbtruck.com

| | |
|------------------------------------|-----------------------------------|
| Name | 3.2 tons Dongfeng Crane Truck |
| Dimension(LxWxH) | 5990x2200x3050 mm |
| Total Mass | 6350 kg |
| Rated Payload | 3000 kg |
| Kerb Weight | 3350 kg |
| Passenger | 3 |
| Approach/Departure Angle | 23°/13 ° |
| The Parameters of Chassis | |
| Manufacture/Model | Dongfeng |
| Driving Type | 4x2 |
| Wheel Base | 3308 mm |
| Gearbox | WLY5 |
| Front/Rear Track | 1640/1655 mm |
| Tyre model | 7.00R16 |
| The Number of Tyre | 6+1 (spare tyre) |
| Front/Rear Suspension | 1120/2095 mm |
| Axles Loading | Front 2.2 T Rear 3.5 T |
| Oil Tank | 76L Iron |
| The Parameters of Engine | |
| Manufacturer/Model | ISUZU/ JE493ZLQ3A |
| Rated Power | 75kw/102hp |
| Fuel Type | Diesel oil |
| Displacement/Capacity | 2771 ml |
| Emission Standard | Eu 3 |
| Cylinder | 4 |
| Max. Torque/ speed | 240N.m/ 1700rpm |
| Velocity | 3400 rpm |
| The Parameters of Equipment | |
| Color/Logo | Customized |
| Rear bucket | 3500x2000x500 mm |
| Crane | Xcmg 3.2 tons straight arm, SQS68 |

XCMG 3.2 tons straight arm crane specifications

| | |
|----------------------------------|--------------------------|
| Model | SQS68 (3.2 tons, 3 arms) |
| Max loading weight | 3,200 kg |
| Max torque | 67.2 kN.m |
| Max outreach | 7.7 m |
| Max lifting height | 9.5 m |
| Oil tank capacity | 45 L |
| Max pressure of hydraulic system | 20 mpa |
| Recommended pump capacity | 40 L/min |
| Installation space | 800 mm |
| Slewing angle | 360 ° |
| Crane weight | 940 kg |
| Stabilizer spread | 2029-3550 mm |



DONGFENG Crane Truck Picture



Crane Truck Working Stock



Crane Truck Working Working



Export



ITRUCK
SPECIAL VEHICLES

Hubei iTruck Import and Export Trading Co., Ltd

☎ 0086 19947597881

✉ alex@hbitruck.com

🌐 hbitruck.com

ROOM B1084 FLOOR 9TH-14TH, BUILDING A, BAOYE CENTER, NO. 31ST, JIANSHE FIRST ROAD,
QINGSHAN DISTRICT, WUHAN