

4X2 EURO 6 DONGFENG 3000 LITERS WATER TANK FIRE FIGHTING TRUCK

Our Product Introduction

for more products please visit us on hbitruck.com

Basic Information

- Place of Origin: Hubei
- Brand Name: Dongfeng
- Certification: ccc
- Minimum Order Quantity: 1
- Packaging Details: nude with waxing
- Delivery Time: 30-35 working days
- Payment Terms: T/T, , L/C, Western Union
- Supply Ability: 50 units per month

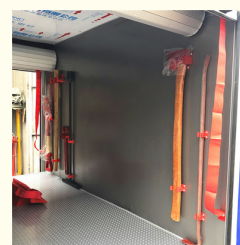


Product Specification

- Name: Fire Fighting Truck
- Wheelbase: 3300 Mm
- Cabin: Crew Cab
- Tire: 7.00R16
- Water Tank: 3000 Liters
- Foam Tank: Optional
- Pump: CB10/20
- Fire Cannon: PS20
- PTO: Sandwich
- Tank Material: Carbon Steel, Stainless Steel Optional
- Warranty: 2 Years
- Highlight: **DONGFENG WATER TANK FIRE FIGHTING TRUCK**
, Dongfeng Fire Engine Truck



More Images



Product Description

4X2 EURO 6 DONGFENG 3000 LITERS WATER TANK FIRE FIGHTING TRUCK

Vehicle technical parameters

1. Chassis

Model: EQ1032N51DJ3 Class II truck chassis
Manufacturer: China Dongfeng Motor Corporation

2. Engine

Model: diesel engine. Other optional
Power: 96kW (at 3000r/min)
Torque: 350N·m (at 1200-1400r/min)

Our Product

- 3. Drive type:** 4×2
4. Wheelbase: 3300mm
5. Maximum speed: 90km/h
6. Dimensions: length × width × height = 6200mm × 2400 mm × 2850 mm
7. Liquid capacity: 3000kg water (water tank capacity: 3000L)
8. Fire pump
 Model: CB10/20 normal fire pump
 Flow: normal pressure 20L/s
 Pressure Force: 1.0MPa at normal pressure
 Water diversion time: ≤30s (when the suction depth is 7m)
9. Fire cannon
 Model: PS20
 Pressure: 0.8 1.0MPa
 Working flow: 20L/S
 Range: ≥40m
 Slewing angle: 360° horizontally, -30° 80° in pitch

Vehicle structure

1. Cab, passenger compartment

Structure: long head, double-row seats with four doors, all-steel frame welded structure.
 Seating arrangement: 2 people in the front row, 4 people in the back row.
 Equipment: In addition to the original vehicle equipment, it is equipped with a 100W alarm, a rotary warning light switch, a power take-off control switch and indicator light, and a radio power line pile.

2. Liquid tank

Material: high-quality carbon steel tank body, treated with high-tech anti-corrosion.
 Structure: Steel plate welding, with internal anti-sway plate
 Equipment: ※ 1 inlet hole with quick locking and opening device
 ※ 1 overflow valve device
 ※ 1 liquid level indicator
 ※ 1 sewage outlet, controlled by manual valve
 ※ The diameter of the internal water injection pipe entering the liquid tank is Φ50mm

3. Fire pump installation form: mid-mounted

4. Pipe system

Internal water inlet pipeline: 1 Φ100mm rear water inlet, entering the fire pump from the tank body, equipped with 1 Φ100mm butterfly valve, connecting the liquid tank and the water pump
 External water inlet pipeline: The diameter of the external water inlet on both sides of the pump is Φ100mm, connected to the external suction pipe, internal buckle pipe thread interface, (sealed with cover); two-way water diversion on both sides of the pump, suction pipe Φ100×2m (4 roots)
 Water outlet pipeline: ※ There are 2 Φ65mm ball valves on both sides of the water pump to control the normal pressure outlet (sealed with cover);
 ※ 1 Φ80mm cannon pipeline, using Φ80mm flexible joint and controlled by Φ80mm ball valve.
 Water injection pipeline:
 ※ 1 Φ50mm water injection pipeline, which can directly inject water into the tank through a water pump
 ※ There is a Φ65mm external water injection port on each side
 Drain water pipeline: To protect the water pump and each ball valve, install a drain valve at the lowest point of the pipeline.
 Cooling water pipeline: In order to enable the power take-off to cope with various complex situations during work, it is equipped with cooling water pipeline and stainless steel ball valve.

5. Fire cannon operation mode: manual

6. Power take-off

Type: sandwich type
 Operation: solenoid valve control
 Cooling method: forced adjustable water cooling.
 Lubrication method: splash oil lubrication.

7. Equipment box and pump room

Material: The frame is an adjustable high-strength porous plate, and the mask is a bonded aluminum plate (anodized).
 Structure: The pump room and equipment box are all-steel frame welded structures, and there are aluminum alloy curtain doors on the left and right sides of the equipment box and the left and right rear sides of the pump room.

8. Additional electrical system

※ There is a long row of warning lights at the front of the top of the cab, and a medium-sized red round warning light at the back (located at the top of the rear equipment box).
 ※ There are 1 24V and 60W fire scene lighting lamps on the front and rear of the roof;
 ※ There are two flashing lights on the top of each side of the vehicle, and safety sign lights and side reflectors (combined type) are installed below. There are front and rear clearance lights, one turn signal on each side, and lighting lamps are installed in the passenger room, equipment box, and pump room, and they comply with GB4785 regulations.
 ※ The power of the alarm is 100W; the alarm, warning light, and flashing light circuits are independent additional circuits, and the control devices are installed in the cab.
 ※ Additional instruments and switches are centrally arranged on the control panel for easy operation. The instrument panel is equipped with: 1 vacuum gauge, 1 water pump outlet pressure gauge; 1 fire pump tachometer; 1 liquid level indicator; 1 butterfly valve switch for the rear water inlet and gun pipeline; 1 power take-off control switch and indicator; 1 pump room and equipment box light switch.

Equipment layout requirements and equipment configuration standards

- ※ Air respirator brackets can be set in the equipment box.
- ※ The equipment is compactly arranged, firmly clamped, and easy to use.
- ※ Use special clamps that are rust-proof, vibration-proof, anti-falling, and anti-scratch to fix all equipment in the equipment table.
- ※ The spare tire is installed under the rear of the vehicle.
- ※ Conventional equipment: See Appendix 1

Overall technical requirements

1. Vehicle baking paint
 - ※ Use domestic high-quality paint;
 - ※ The roof, fender, rim outer ring, and front bumper are white, and the rest are bright red.
2. All operating switches, instruments, equipment and vehicles have nameplates that comply with the regulations;
3. The performance of the vehicle complies with the provisions of GB7956 "Fire Performance Requirements and Test Methods for Fire Trucks";
4. The liquid tank complies with the provisions of GA39.4-92;
5. All riveting spacing is uniform and moderate;
6. The roof is equipped with a protective railing.
7. The vehicle is equipped with an up and down escalator.

Equipments Parts List

ITEM	NO.	Equipment Name	Qty
Fire Fighting Equipment	1	water suction tube (Φ100x2m)	4

	2	Water filter	1
	3	Water separator	1
	4	Water collector	1
	5	65 water belt(20m)	6
	6	80 water belt (20m)	4
	7	Different diameter interface	2
	8	Different shape and different diameter interface	1
	9	Different shape interface	2
	10	Water covered cloth	4
	11	Water belt bridge	2
	12	Water belt hook	4
	13	Ground fire hydrant wrench	1
	14	Underground fire hydrant wrench	1
	15	Water suction pipe wrench	4
	16	Fire fighting water gun	3
	17	Foam gun	1
	18	Dry powder fire extinguisher	1
	19	Fire bucket	1
Lifesaving Tools	1	Fire ax	1
	2	shovel	1
	3	T-ho	1
	4	Iron collars	1

Dongfeng Fire Rescue Truck Picture



Hubei iTruck Import and Export Trading Co., Ltd

☎ 0086 19947597881

✉ alex@hbitruck.com

🌐 hbitruck.com

ROOM B1084 FLOOR 9TH-14TH, BUILDING A, BAOYE CENTER, NO. 31ST, JIANSHE FIRST ROAD,
QINGSHAN DISTRICT, WUHAN