

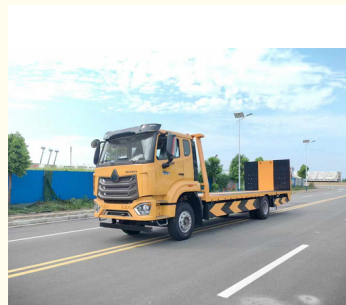
6 Wheels Sinotruck Howo Wrecker Bed Winch Support Excavator Loading Road Rescue Truck

Our Product Introduction

for more products please visit us on hbitruck.com

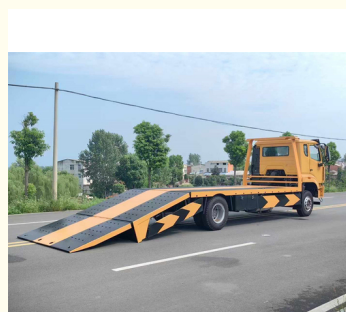
Basic Information

- Place of Origin: Hubei
- Brand Name: Sinotruck
- Certification: ccc
- Minimum Order Quantity: 1
- Price: 43200
- Packaging Details: nude with waxing
- Delivery Time: 30-35 working days
- Payment Terms: L/C, T/T, Western Union, D/P, D/A
- Supply Ability: 50 units per month

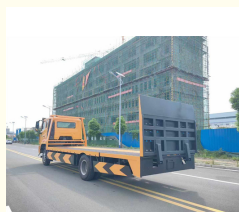
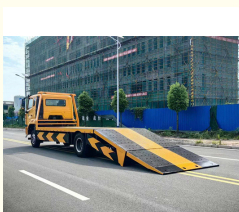


Product Specification

- Item: Wrecker Bed Truck
- Dimension: 8500X2500X2800
- Loading Capacity: 10-15 Tons
- Total Weight: 18 Tons
- Tire Model: 12R22.5
- Engine: WD615.62
- Winch: 5 Tons
- Main Bed: 5 M
- Fold Bed: 1.5 M
- Highlight: excavator loading road rescue truck, Sinotruck Excavator Loading Road Rescue Truck



More Images



Product Description

6 wheels Chinese winch support wrecker bed road rescue truck

The full name of a road clearing vehicle is a road clearing vehicle, also known as a trailer, road rescue vehicle, or towing vehicle. It has multiple functions such as lifting, pulling, and lifting. The clearing vehicle is mainly used for road malfunctioning vehicles, urban illegal vehicles, and emergency rescue. Obstacle clearing vehicles are mainly classified into: trailer connected type, trailer separated type, one trailer one type, flat one trailer two type, multifunctional obstacle clearing vehicle, hydraulic automatic clamping type

Our Product

Main Technical specification

ITEM	UNIT	PARAMETER
Vehicle		Sinotruck wrecker bed truck
Overall dimensions	mm	8570x2550x2830
Flat dimension	mm	7000x2400
Total weight	kg	18000
Curb weight		10420
Wheel base	mm	4600
F/R track base		1870/1800
F/R suspension		1410/3200
Approach/departure angle	°	17/10
Max speed	km/h	90
Axle Load	kg	7000/16000
Tire specification	12R22.5 / 7 units	Number of axles 2
Engine performance	Manufacturer	WEICHA
	Model	WD615.62
	Emission/kw	9726ml/196Kw, 266Hp
	Type	Diesel, 6 cylinder , direct-line, turbocharge and water cooling
	Rate speed	2200 r/min
	Max torque/speed	1100N.m /1100-1600 r/min
Transmission	10 gears	Power steer Yes
Standard Configuration	<p>HW76 new front cab; WD615.62 engine; HW15710 gearbox+HW70 flange type power take-off; VGD75 front axle (drum); MCX16ZG single rear axle (drum); Speed ratio 4.803; Double layered frame (8+5/300); Front and rear standard version with multiple leaf springs (10/9+6); ECO108 steering gear; Standard version exhaust system; Without ABS; High mounted bumper (metal); Ordinary wheels; 12R22.5 TFT instrument (in English);</p> <p>Top configuration: standard 4 tons of lifting, 8 tons of lifting cylinder, mainbed 4.2 m can bear about 15 tons, auxiliary board, 1.5 meters can bear about 4 tons , flip tail 1.65m can bear about 2 tons,</p> <p>suitable for a variety of road conditions excavator trailer transport and urban road construction machinery transfer</p>	

Sinotruck howo wrecker bed truck



Wrecker Bed Truck Stock



Export



ITRUCK
SPECIAL VEHICLES

Hubei iTruck Import and Export Trading Co., Ltd

☎ 0086 19947597881

✉ alex@hbitruck.com

🌐 hbitruck.com

ROOM B1084 FLOOR 9TH-14TH, BUILDING A, BAOYE CENTER, NO. 31ST, JIANSHE FIRST ROAD,
QINGSHAN DISTRICT, WUHAN