

8-10 Ton Capacity JAC S9 Refrigerated Truck With 5.2m Refrigerated Box

Our Product Introduction

for more products please visit us on hbitruck.com

Basic Information

- Place of Origin: Hubei
- Brand Name: JAC
- Certification: CCC
- Model Number: S9
- Minimum Order Quantity: 1
- Price: USD28600/unit
- Packaging Details: nude, with waxing
- Delivery Time: 60 days
- Payment Terms: L/C, T/T
- Supply Ability: 50 units per month

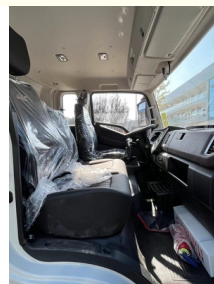
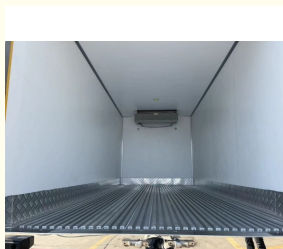
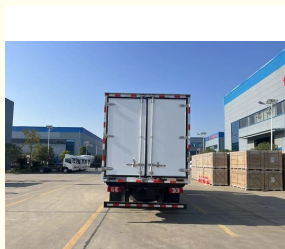


Product Specification

- Name: Refrigerator Truck
- Drive Model: 4x2
- Box Dimension: 5200x2300x2300 Mm
- Wheelbase: 4200 Mm
- Loading Capacity: 8-10tons
- Lowest Temperature: -18 Degree
- Tire: 8.25R16
- Transmission: 8 Forward, 2 Reverse
- Power Steer: Yes
- Air Condition: Yes
- Cooling Unit: CARRIER/THERMO KING
- Highlight: **JAC S9 Refrigerated Truck,
10 Ton Capacity Refrigerated Truck**



More Images



Product Description

8-10 ton capacity JAC S9 refrigerated truck with 5.2m refrigerated box.

Refrigerated truck

A refrigerated truck is a closed box type transport vehicle used to transport frozen or fresh goods. It is a specialized refrigerated transport vehicle equipped with a refrigeration unit and a polyurethane insulated compartment. It is commonly used to transport frozen food (refrigerated truck), dairy products (dairy transport truck), vegetables and fruits (fresh goods transport truck), vaccines and drugs (vaccine transport truck), etc.

structure

A refrigerated truck is composed of the walking part of a dedicated vehicle chassis, as well as insulation and thermal insulation compartment (usually made of polyurethane material, fiberglass, color steel plate, stainless steel, etc.), refrigeration unit, temperature recorder for refrigerated trucks inside the compartment, and other components. For vehicles with special requirements, such as meat hook trucks, optional accessories such as meat hooks, waist guards, aluminum alloy guide rails, ventilation ducts, etc. can be installed.

Manufacturing Technology of Refrigerated Carriage Body

1. The "sandwich" panel adhesive type assembled in pieces is currently used by large refrigerated truck manufacturers in China, and the refrigerated trucks produced using this technology have high thermal insulation performance.
2. Injection foam type assembled in sections.
3. The overall skeleton is injected with foam.
4. Vacuum adsorption adhesive

Classification of refrigeration units:

Refrigeration units are divided into non independent refrigeration units and independent refrigeration units. Domestic and imported units, etc. Most car models use external refrigeration units, while a few micro refrigerated trucks use internal refrigeration units. For refrigerated trucks with lower temperature requirements, a built-in cold plate (equivalent to an evaporator) can be used in the compartment.

Classified by chassis carrying capacity: micro refrigerated truck, small refrigerated truck, medium refrigerated truck, large refrigerated truck

Classified by carriage type: bread refrigerated truck, box refrigerated truck, semi-trailer refrigerated truck

Important equipment

Refrigerated truck refrigeration unit

Refrigerated truck refrigeration unit: an important equipment that provides a continuous supply of "cold" for refrigerated truck containers. It is usually installed at the top of the front of the container and has an air conditioning like appearance, but has stronger cooling capacity than air conditioners of the same volume.

Refrigeration units are generally divided into two types: independent units and non independent units. The difference is that independent units rely entirely on another unit to generate electricity and maintain operation, while non independent units rely entirely on the engine operation of the entire vehicle to drive the cooling work of the unit.

Selection of refrigeration units for refrigerated trucks.

Generally, different power refrigeration units are selected based on the volume of the refrigerated compartment and the temperature requirements of the transported goods.

Main Technical specification

Complete Vehicle	
Vehicle	JAC refrigerated truck
Overall dimension (mm)	7460 × 2300 × 3400
Refrigerator body (mm)	5200 × 2300 × 2300
Gross vehicle weight (kg)	Appro × 13460
Net weight (kg)	Appro × 4780
Loading (kg)	Appro × 8550
Wheel base (mm)	4200
Max speed	105

JAC Truck Chassis Parameter	
Condition	New
Cabin	S9 2090mm cabin, a sleeper, multifunction steering wheel, backup camera, seat with airbag, power steering, air conditioner, electric window, central locking, electrically heated rear view mirror, daytime running lights, MP3, 3 passengers, left hand drive
Traction system	4x2
Engine	Brand: CUMMINS Model: HFC4DE2-2E Engine power: 160hp Rated speed: 2900rpm Type: diesel, 4 cylinder. Displacement: 2.951L Emission standard : Euro 6
Transmission	8 forward, 2 rear, manual operated
Tire model	8.25R16
No. of tires	6+1 pcs
Refrigerated Van Body Parameter	
Condition	New
Standard configuration	<ol style="list-style-type: none"> 1. Refrigerated box inside and outside wall material are FRP. 2. Intermediate insulation material is polyurethane, thickness 80mm. 3. Equipped with America CARRIER cooling unit, the lowest temperature -15°C. 4. Door frame material are stainless steel. 5. The door lock material is galvanized. 6. The box body is aluminum profile hemming. 7. Refrigerator box roof is sealed, rear open double doors. 8. Refrigerated box floor with aluminum alloy ventilation slots.





Refrigerator Van Truck Workshop

ITRUCK
SPECIAL VEHICLES

Hubei iTruck Import and Export Trading Co., Ltd

☎ 0086 19947597881

✉ alex@hbitruck.com

🌐 hbitruck.com

ROOM B1084 FLOOR 9TH-14TH, BUILDING A, BAOYE CENTER, NO. 31ST, JIANSHE FIRST ROAD,
QINGSHAN DISTRICT, WUHAN