

## Chinese Dongfeng Brand Double Cabin 4WD 4X4 Truck Mounted Crane With XCMG 5 Tons Crane For military use

Our Product Introduction

for more products please visit us on [hbitruck.com](http://hbitruck.com)

### Basic Information

- Place of Origin: Hubei
- Brand Name: DONGFENG
- Certification: CCC
- Model Number: DFL5250SCD
- Minimum Order Quantity: 1
- Price: 32800
- Packaging Details: nude with waxing
- Delivery Time: 30-35 working days
- Payment Terms: L/C,T/T,Western Union
- Supply Ability: 50 units per month



### Product Specification

- Item Name: Crane Truck
- Chassis: Dongfeng
- Crane Loading: 8-10 Tons
- Crane Type: Straight Arm
- Support Leg: 4
- Wheelbase: 4500+1350 Mm
- Lifting Height: 15.5m
- Working Radius: 13.5m
- Crane Model: SQS200
- Crane Brand: XCMG
- Drive Model: 6X6
- Highlight: 10 Ton Truck Mounted Crane,  
6WD 6X6 Truck Mounted Crane,  
Military Use Truck Mounted Crane



### More Images



## Product Description

### 4X4 Dongfeng 210hp Engine 5 tons XCMG Straight arm truck mounted crane truck

The official name of the truck mounted crane is the truck mounted crane transport vehicle, which is a device that uses hydraulic lifting and telescopic systems to lift, rotate, and hoist goods. It is usually assembled on cargo trucks. It is widely used for the hoisting and transportation of infrastructure materials and other equipment in municipal construction, coal mining engineering, landscaping, and other fields.

Truck mounted crane is a type of transportation vehicle that combines a truck mounted crane and a chassis. It is composed of a crane arm, a turntable, a frame, legs, and other parts. The mechanical action of the crane is achieved through the actions of mechanisms such as amplitude, expansion, rotation, and hoisting, and the lifting operation is achieved through the combination of different actions.

**Applicable working conditions:** In traditional areas of Dongfeng, high-density goods such as iron powder and iron ore are loaded and transported, suitable for poor road conditions such as mountainous roads and construction site roads.

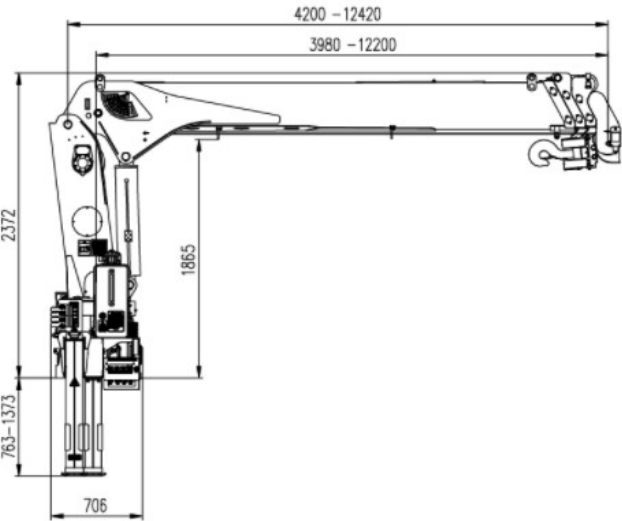
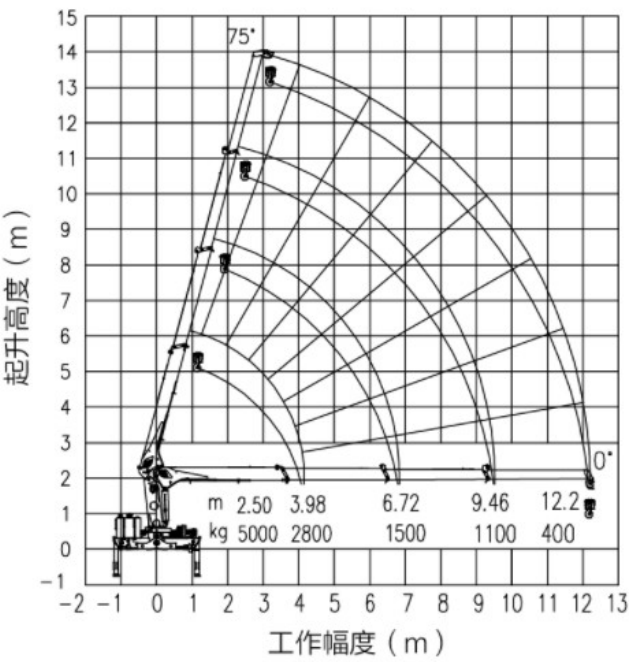
### Main Technical specification

Overview	
Name	5 tons Dongfeng Crane Truck
Dimension(LxWxH)	7250x2400x3550 mm
Total Mass	16000 kg
Rated Payload	7500 kg
Kerb Weight	9500 kg
Passenger	3
Approach/Departure Angle	16°/12 °
The Parameters of Chassis	
Manufacture/Model	DFL1160A8
Driving Type	4x4
Wheel Base	4500 mm
Gearbox	9JS119T-B
Front/Rear Track	2011/1860 mm
Tyre model	10.00R20
The Number of Tyre	6+1 (spare tyre)
Front/Rear Suspension	1350/2200 mm
Axles Loading	Front Man 6 T Rear Man 10 T
Oil Tank	300L Iron
The Parameters of Engine	
Manufacturer/Model	Cummins /B210 33
Rated Power	155kw/210hp
Fuel Type	Diesel oil
Displacement/Capacity	8300 ml
Emission Standard	Eu 3
Cylinder	6
Max. Torque/ speed	1090N.m/ 1200rpm
Velocity	2200 rpm
The Parameters of Equipment	
Color/Logo	Customized
Rear bucket	7000x2200x500 mm
Dump function	NO
Crane	Xcmg 8 tons straight arm, MSQS200-4

### XCMG 8 tons straight arm crane specifications

Model	MSQS125-4 (5 tons, 4 arms)
Max loading weight	5,000 kg
Max torque	125 kN.m
Max outreach	11 m
Max lifting height	12.5 m
Oil tank capacity	90 L
Max pressure of hydraulic system	26 mpa
Recommended pump capacity	63L/min
Installation space	900 mm

Slewing angle	360 °
Crane weight	2280 kg
Stabilizer spread	2280-5500 mm
Support leg	yes



DONGFENG 4X4 Crane Truck Image



*Crane Truck Working Stock*



*Crane Truck Working Working*





## Export





**Hubei iTruck Import and Export Trading Co., Ltd**



0086 19947597881



alex@hbitruck.com



hbitruck.com

ROOM B1084 FLOOR 9TH-14TH, BUILDING A, BAOYE CENTER, NO. 31ST, JIANSHE FIRST ROAD,  
QINGSHAN DISTRICT, WUHAN